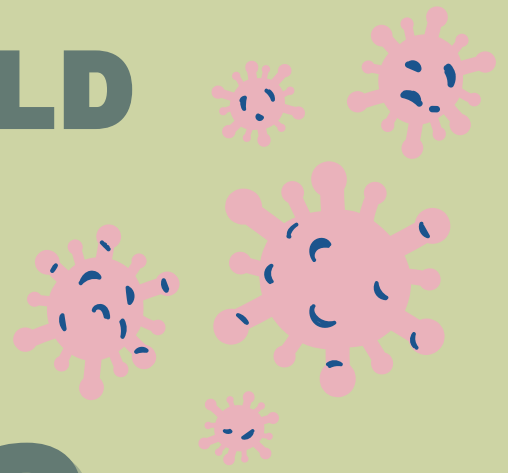


# WHAT YOU SHOULD KNOW ABOUT RSV INFECTIONS



## What is RSV?



RSV stands for respiratory syncytial virus. Everyone contracts RSV at some point in their lives. Young children and elderly are at risk for severe illness. **RSV is the secondary cause of pediatric mortality worldwide.**

## Symptoms

- Shortness of breath
- Wheezing
- Intercostal retractions
- Often mild, like a cold
- Coughing and sneezing
- Fever
- Difficulty feeding



## Risk factors for severe RSV

- <6 months old
- Born prematurely

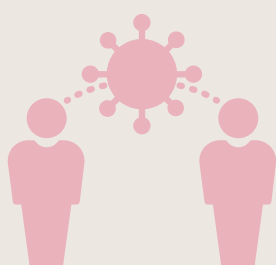


## When to see a doctor?

- Short, shallow and rapid breathing
- Struggling to breathe - chest muscles and skin pull inward with each breath
- Nostrils flaring with each breath
- Wheezing
- Pale or blue lips/mouth
- Poor feeding
- Cough

## Prevention strategies

- Prevent transmission
  - Sneezing
  - Coughing
  - Breathing
- Keep an eye out for the alarm signs!
- Supportive care in the hospital



For more information:  
<https://rsvgold.com/100xgold/>



RSV GOLD